

Music Theory Sample Paper 2020 Grade 3

Exam duration: 1½ hours maximum

Total marks (out of 75):

The following sample exam paper is a printed representation of how this exam will appear online. The structure of the questions, the knowledge required and the topics covered will be the same. However, in order to suit an online platform, the wording of the questions and the method of answering them may be different.

Terminology:

bar	semibreve	minim	crotchet	quaver	semiquaver	demisemiquaver
measure	whole note	half note	quarter note	8th note	16th note	32nd note

1.5 Tick (✓) **one** box to show which bar is grouped correctly. (1)

1.6 Tick (✓) or cross (X) each box to show whether the rests are correct or incorrect. (3)

1.7 Look at this bar of music: (1)

Which of the following shows the bar above correctly rewritten using notes of **twice the value**? Tick (✓) **one** box.

2 Pitch

/15

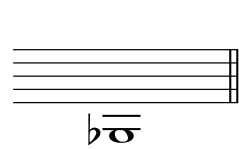
2.1 Tick (✓) **one** box to show the correct name of each note. (6)

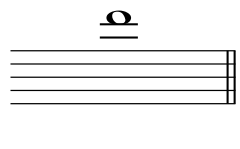
2.2 Compare bars **A**, **B** and **C**, then circle **TRUE** or **FALSE** for each of the **three** statements. (3)

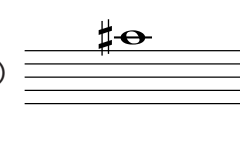
A  B  C 

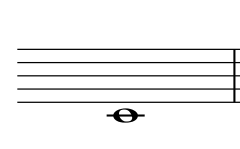
- (a) **A** and **B** are at the same pitch **TRUE** **FALSE**
 (b) **B** is one octave higher than **C** **TRUE** **FALSE**
 (c) **C** is one octave lower than **A** **TRUE** **FALSE**

2.3 Tick (✓) the correct clef needed to make each of these named notes. (4)

(a) 
 B \flat
 Treble Bass

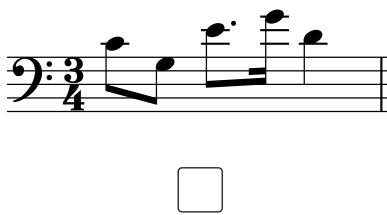
(b) 
 D
 Treble Bass

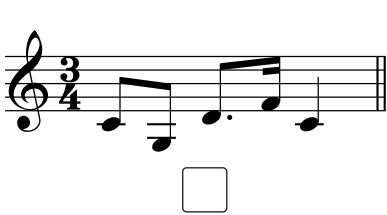
(c) 
 C \sharp
 Treble Bass

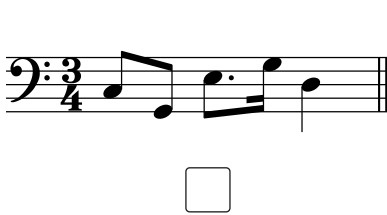
(d) 
 E
 Treble Bass

2.4 (a) Look at this bar of music:  (1)

Which of the following shows the bar above correctly rewritten **one octave lower**? Tick (✓) **one** box.

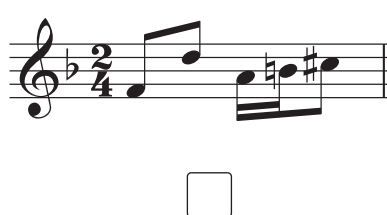


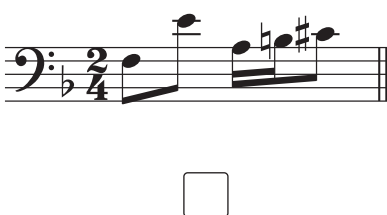


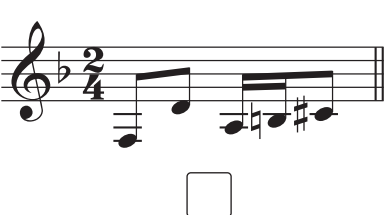


(b) Look this bar of music:  (1)

Which of the following shows the bar above correctly rewritten **one octave higher**? Tick (✓) **one** box.







3.1 Tick (✓) **one** box to show the correctly written key signature of F minor. (1)









3.2 Tick (✓) **one** box to show the correctly written key signature of A major. (1)









3.3 Here is a melody in the key of G minor. Place a cross (X) in **three** boxes where accidentals are **not** needed. (3)



3.4 Circle the correct key of each of these melodies. (3)



E \flat major A \flat major C minor D minor



B \flat major C minor G minor E \flat major



G major G minor D minor B \flat major

3.5 Cross (X) the **two** incorrect notes in the following scale. (2)

C# harmonic minor, ascending

3.6 Tick (✓) **one box for X** and **one box for Y** to show which notes are needed to complete the scale of **F melodic minor**. (2)

X E E# Eb Cb

Y G E Gb Eb

3.7 Tick (✓) **one** box for each named scale, to show which scale is correctly written. (3)

(a) **A major, ascending**

(b) **Bb major, ascending**

(c) F# harmonic minor, descending

4 Intervals

/10

4.1 For each example, write one note to form the named interval. Your note should be **higher** than the given note. The key is F# minor. (6)

(a)

minor 6th

(b)

perfect 4th

(c)

major 7th

(d)

minor 3rd

(e)

major 2nd

(f)

perfect 8th/8ve

4.2 Circle the type of each interval. The lower note in each is the key note. (4)

(a) perfect major minor

(b) perfect major minor

(c) perfect major minor

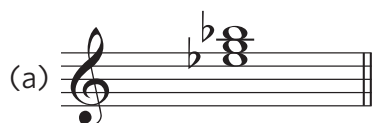
(d) perfect major minor

5 Tonic Triads

/10

5.1 Circle **TRUE** or **FALSE** for each statement.

(2)



This is the tonic triad of Eb major

TRUE

FALSE



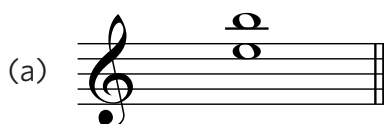
This is the tonic triad of B minor

TRUE

FALSE

5.2 Add **one** missing note to complete each triad, with the tonic as the lowest note. Use accidentals if necessary.

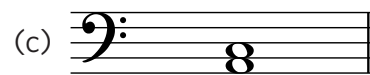
(3)



E major



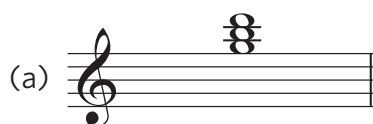
C minor



A minor

5.3 Circle the correct key for each tonic triad.

(5)



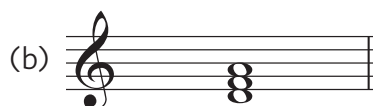
(a)

G minor

B minor

G major

D minor



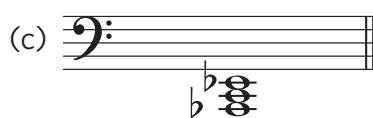
(b)

D major

A minor

B minor

D minor



(c)

Eb major

Ab major

C minor

Bb major



(d)

B minor

B major

G major

D major



(e)

C# minor

G# minor

A major

F# minor

Tick (✓) **one** box for each term/sign.

(5)

alla marcia means:

- majestic
- broadening
- in the style of a march
- in the same way

prestissimo means:

- heavy
- fast
- very fast
- very loud

sempre means:

- always
- simple, plain
- suddenly
- without

 means:

- slight pressure
- staccatissimo
- strong accent
- sforzando

alargando means:

- very slow, solemn
- in time
- slow, stately
- broadening

Study this melody and then answer the questions that follow.

Allegro scherzando

7.1 Compare the following to bar 1 of the melody then tick (✓) the one correct statement. (1)

Allegretto scherzando

A

Allegro scherzando

B

Allegro scherzando

C

A is an exact copy

B is an exact copy

C is an exact copy

They are all different from the original

7.2 Circle **TRUE** or **FALSE**. (1)

The tempo remains the same throughout this melody

TRUE

FALSE

7.3 Complete the following **three** sentences by ticking one box for each.

(3)

(a) The **highest** note in the melody is ...

C E♭ B♭ D

(b) There is a dotted quaver in ...

bar 3 bar 4 bar 5 bar 7

(c) There is a note marked to be played with an accent in ...

bar 1 bar 2 bar 7 bar 8